

An architectural rendering of a modern, multi-story residential building. The building features a light-colored facade with large, curved balconies and glass railings. The balconies are furnished with outdoor seating and plants. The building is set against a clear blue sky with some clouds. In the foreground, there is a swimming pool with a wooden deck and some tropical plants. The overall scene is bright and sunny.

SKYHIGH RESIDENCES BY PAPAS GROUP

19 B & C KOSTI PALAMA, MESA
GEITONIA, LIMASSOL 4001 CYPRUS
TEL: +357 25751975 | FAX: +357
25751976 | E-MAIL:
papasest@logosnet.com.cy
www.npapasgroup.com



Papas Group presents our newest project of two luxury block of apartments consisting of two and three bedroom apartments.

Each apartment has it's own storage room and parking space.

The building also provides an amazing pool and beautiful garden on the ground floor.



BLOCK A (SQM)

Project: PAPAS GROUP				Internal	Cover	Uncover
Ap. No.	BEDS	FLOOR	Area	Veranda	Veranda	

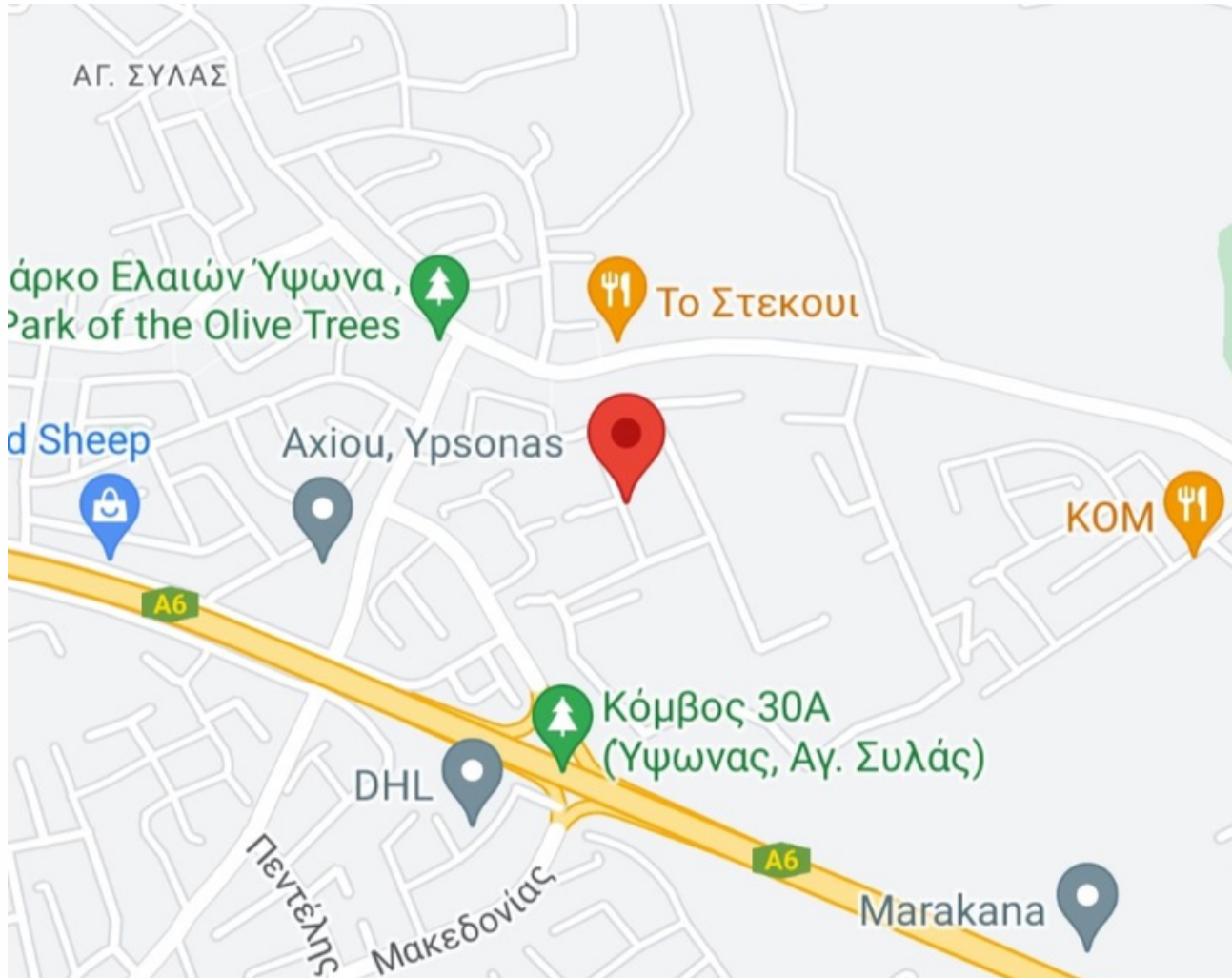
BLOCK A

			M2	M2	M2
101	2 Beds	1st FLOOR	80.00	22.50	2.00
102	2 Beds	1st FLOOR	80.80	23.00	-
103	2 Beds	1st FLOOR	90.60	25.30	4.90
ΚΛΙΜΑΚΟΣΤΑΣΙΟ			30.00		
		ΣΥΝΟΛΟ	281.40	70.80	6.90
201	2 Beds	2nd FLOOR	80.00	22.00	-
202	2 Beds	2nd FLOOR	80.80	23.00	-
203	2 Beds	2nd FLOOR	90.60	24.60	-
ΚΛΙΜΑΚΟΣΤΑΣΙΟ			30.00		
		ΣΥΝΟΛΟ	281.40	69.60	0.00
301	3 Beds	3rd FLOOR	103.00	18.60	42.5
302	2 Beds	3rd FLOOR	80.80	23.00	33.3
ΚΛΙΜΑΚΟΣΤΑΣΙΟ			30.00		
		ΣΥΝΟΛΟ	213.80	41.60	75.80
401	3 Beds	4th FLOOR	110.90	38.50	115.60
		ΣΥΝΟΛΟ	110.90	38.50	115.60
			887.50	220.50	198.30

BLOCK B - SQM

BLOCK B

				M2	M2	M2
	101	2 Beds	1st FLOOR	90.60	30.50	6.60
	102	2 Beds	1st FLOOR	81.00	23.00	-
	ΚΛΙΜΑΚΟΣΤΑΣΙΟ			15.50		
	ΣΥΝΟΛΟ			187.10	53.50	6.60
	201	3 Beds	2nd FLOOR	102.90	18.90	-
	202	2 Beds	2nd FLOOR	81.00	23.00	-
	ΚΛΙΜΑΚΟΣΤΑΣΙΟ			15.50		
	ΣΥΝΟΛΟ			199.40	41.90	0.00
	301	3 Beds	3rd FLOOR	102.90	18.90	6.60
	302	2 Beds	3rd FLOOR	81.00	23.00	-
	ΚΛΙΜΑΚΟΣΤΑΣΙΟ			15.50		
	ΣΥΝΟΛΟ			199.40	41.90	6.60
	401	3 Beds	4th FLOOR	110.00	39.00	60.50
	ΣΥΝΟΛΟ			110.00	39.00	60.50
				695.90	176.30	73.70



The building is located in one of the most prestigious area of Limassol, Ypsonas, near all necessary amenities.

The proximity of the highway allows an easy connection with the city centre, the seaside and the main cities of the island.

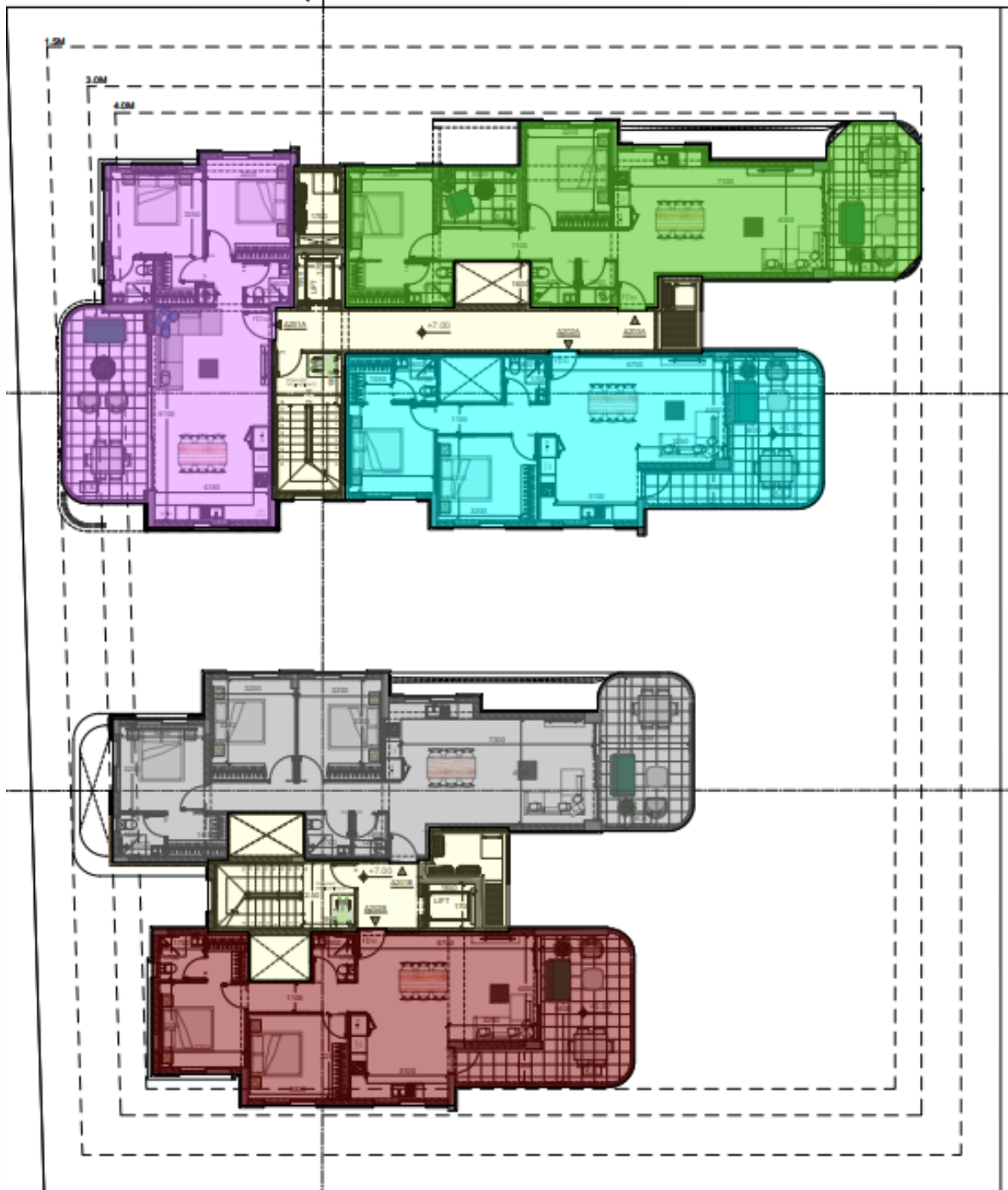


-PLANS- Ground floor

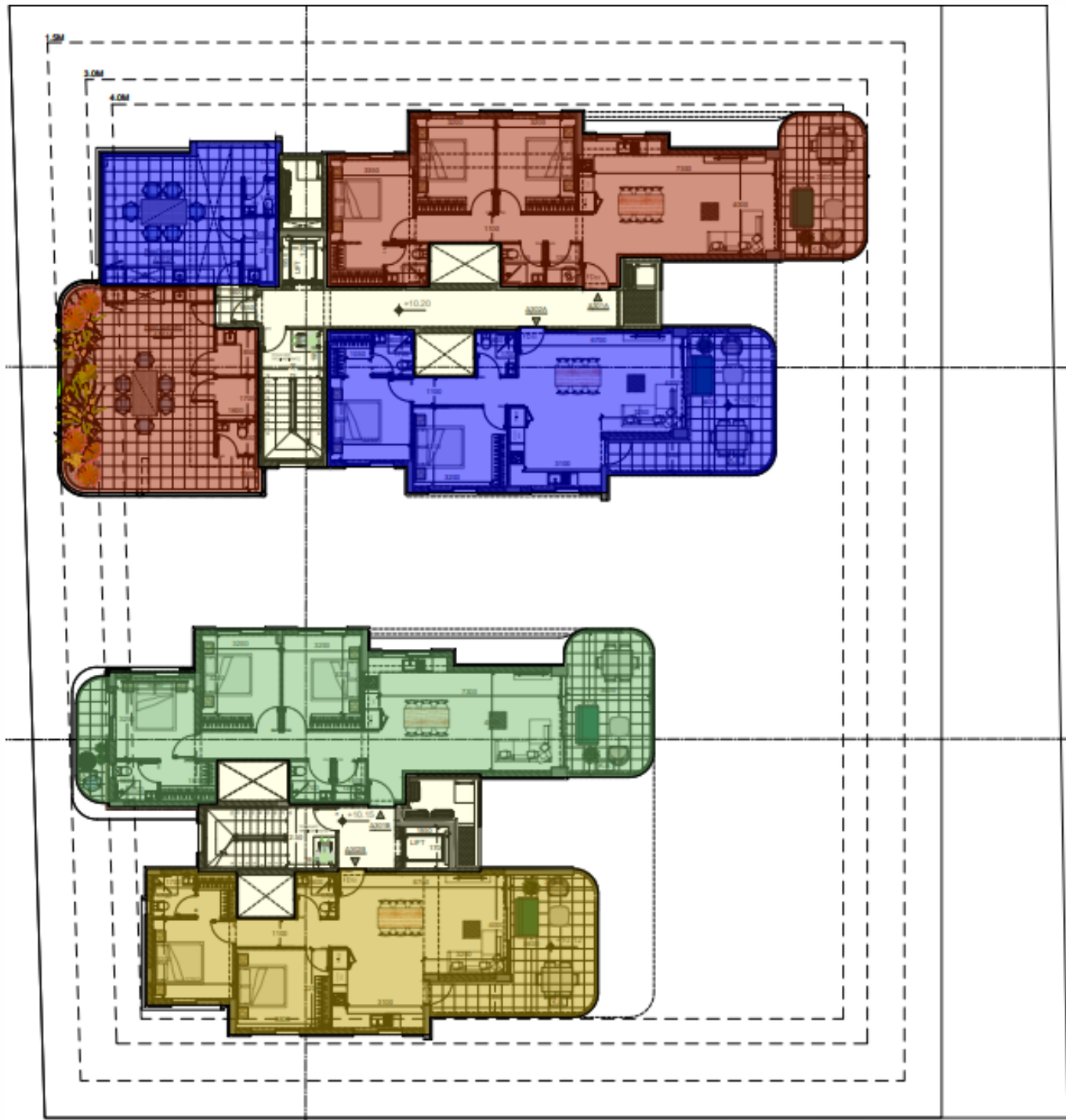


The image is a detailed architectural floor plan of a building, oriented horizontally. The plan is divided into five distinct color-coded wings or sections, each containing various rooms and furniture. A central yellow corridor, labeled '+3.85', runs horizontally through the middle of the plan, connecting the different wings. The wings are colored as follows: pink (top left), blue (top right), yellow (center), red (bottom left), and orange (bottom right). The plan includes numerous rooms, corridors, and furniture items like tables, chairs, and sofas. Dimensions are indicated: '3.0M' and '4.0M' at the top left, and '1.2M' at the top right. The entire building footprint is enclosed within a dashed rectangular boundary. The plan is set against a white background with a grid of dashed lines.

2nd Floor



3rd floor



4th Floor

